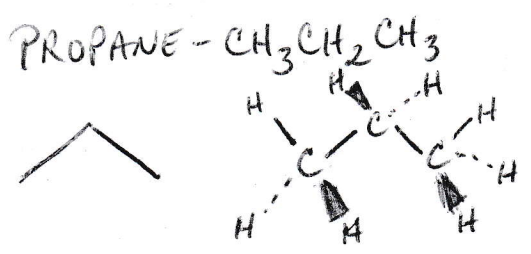
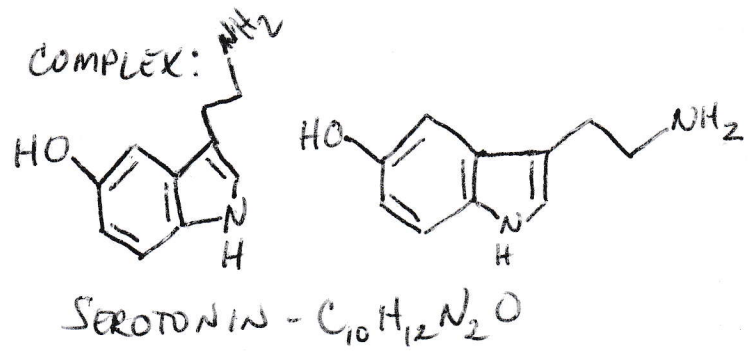


DIAGRAM 1A

SIMPLE:



COMPLEX:



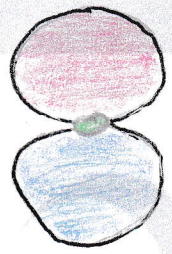
• DIFFERENT WAYS TO EXPRESS THE SAME COMPOUND. BRUSH UP ON YOUR DRAWING SKILLS!



DIAGRAM 1B



S-ORBITAL

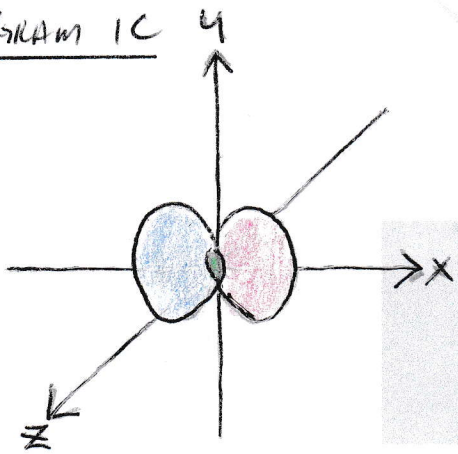


P-ORBITAL

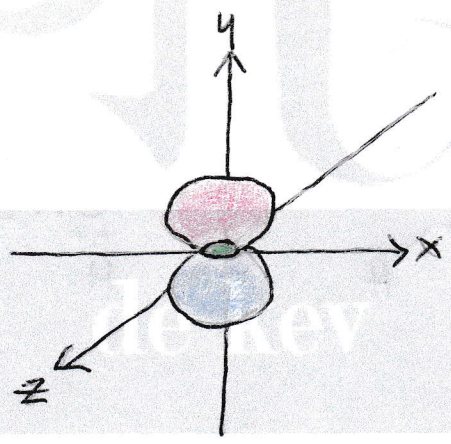


D ORBITAL

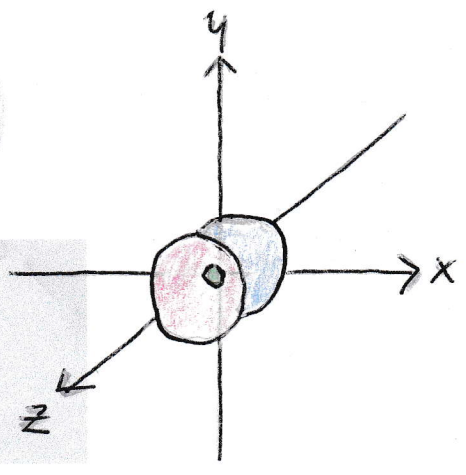
DIAGRAM 1C



$2p_x$ ORBITAL



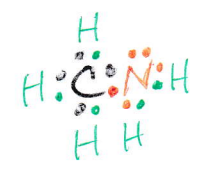
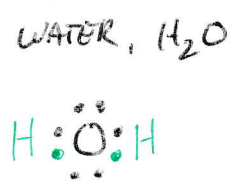
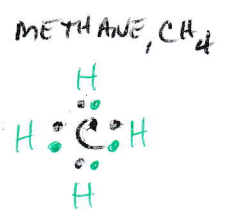
$2p_y$ ORBITAL



$2p_z$ ORBITAL

DIAGRAM 1D

ELECTRON-DOT (LEWIS STRUCTURES)



METHYLAMINE
 CH_3NH_2

LINE-BOND (KERULE STRUCTURES)

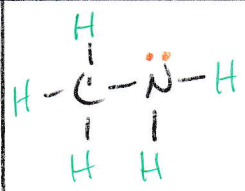
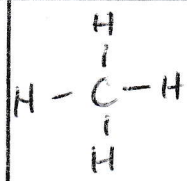
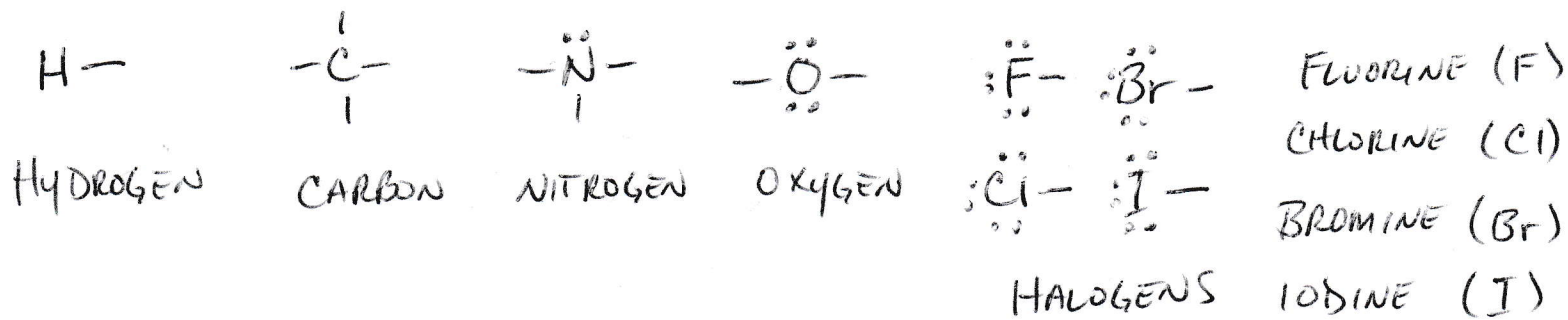
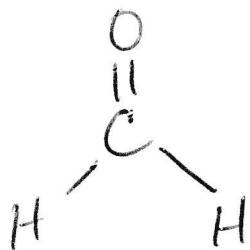


DIAGRAM 1E



LINE-BONDS OMITTING LOOSE-PAIR ELECTRONS WHEN DRAWING

EX: FORMALDEHYDE, CH₂O



CAN ALSO BE DRAWN AS

